

# ELEMENTARY TRANSFER SUMMARY

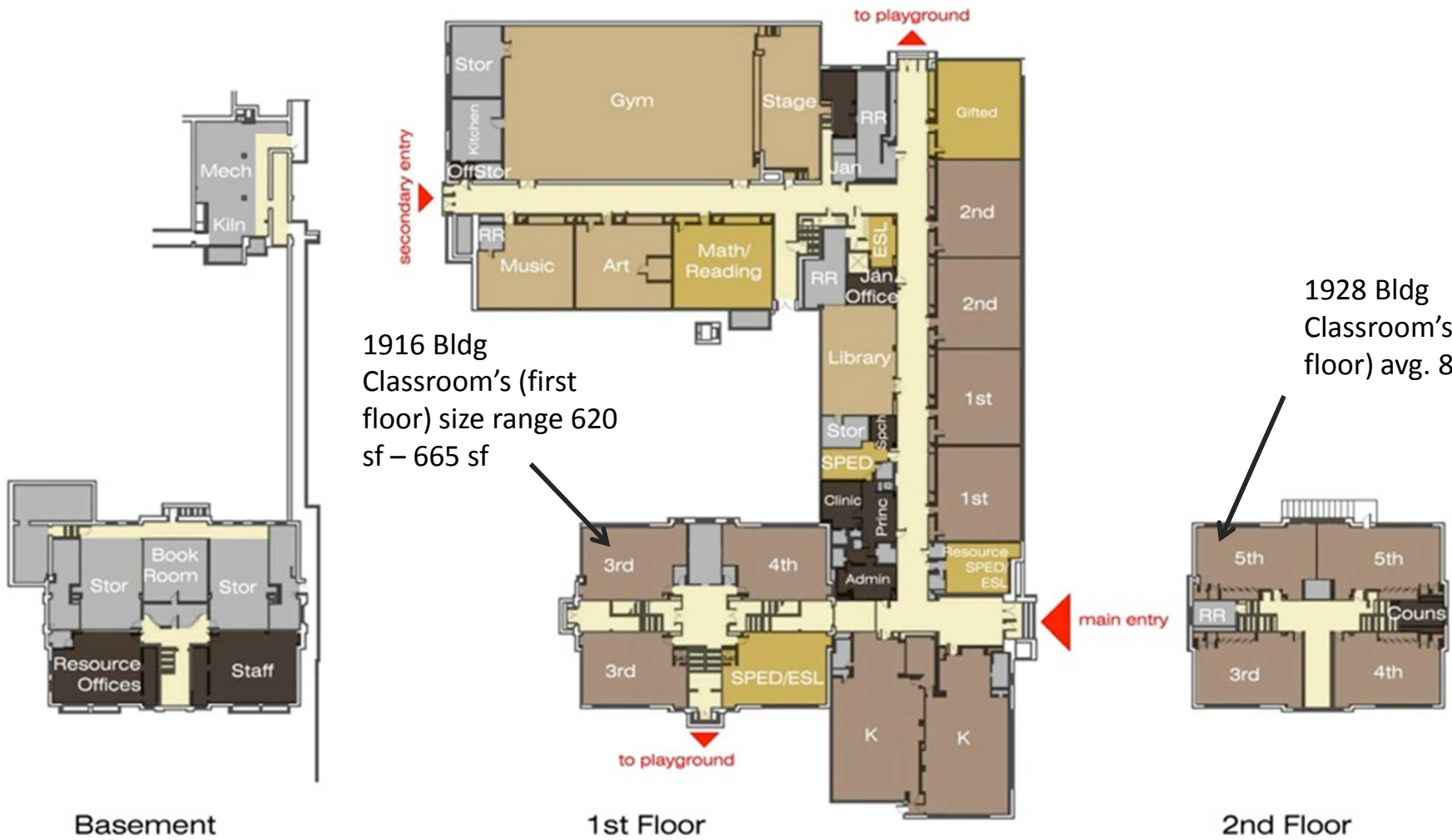
10/14/2011

	<u>From-</u>	<u>BA</u>	<u>CD</u>	<u>DF</u>	<u>HC</u>	<u>KDY</u>	<u>LH</u>	<u>NY</u>	<u>PKY</u>	<u>PP</u>	<u>QR</u>	<u>SHW</u>	<u>SF</u>	<u>SH</u>	<u>WL</u>	<u>Total</u>	<u>Total Enrollment</u>	<u>Transfer %</u>
<b>TO:</b>																		
<b>Broken Arrow</b>						1				3	2	14				<b>22</b>	305	7.2%
<b>Cordley</b>	9		3	5	3			4	4	6	4	8	4	4	1	<b>55</b>	294	18.7%
<b>Deerfield</b>	2	2		2	2				2	1	5	3	2			<b>21</b>	471	4.5%
<b>Hillcrest</b>	2	1	10		6	7	1	6			5	10	6	7	1	<b>62</b>	356	17.4%
<b>Kennedy</b>		1				2	4			1			5		1	<b>14</b>	223	6.3%
<b>Langston</b>	8		2	3						1	4	1	3	1	1	<b>25</b>	463	5.4%
<b>New York</b>		1	1		8				4	3	5	4	1			<b>27</b>	183	14.8%
<b>Pinckney</b>	4	2	3	2	1	3	9		1		4	5	2	10	7	<b>53</b>	231	22.9%
<b>Prairie Park</b>	12		2		10		6	2				4	2	3	1	<b>43</b>	344	12.5%
<b>Quail Run</b>	3		13	2		18	2	2					2	1		<b>43</b>	417	10.3%
<b>Schwegler</b>	5	5		4	2		1	4	3	3			3	1		<b>31</b>	381	8.1%
<b>Sunflower</b>	4				1	3					1	2				<b>13</b>	491	2.6%
<b>Sunset Hill</b>			11		2	2		5	2	6	3				1	<b>32</b>	258	12.4%
<b>Woodlawn</b>	1		4		6	2	1	3	2		1			1		<b>21</b>	229	9.2%
<b>Totals</b>	<b>50</b>	<b>12</b>	<b>49</b>	<b>18</b>	<b>42</b>	<b>37</b>	<b>28</b>	<b>32</b>	<b>23</b>	<b>39</b>	<b>55</b>	<b>30</b>	<b>28</b>	<b>13</b>	<b>462</b>	<b>4646</b>		



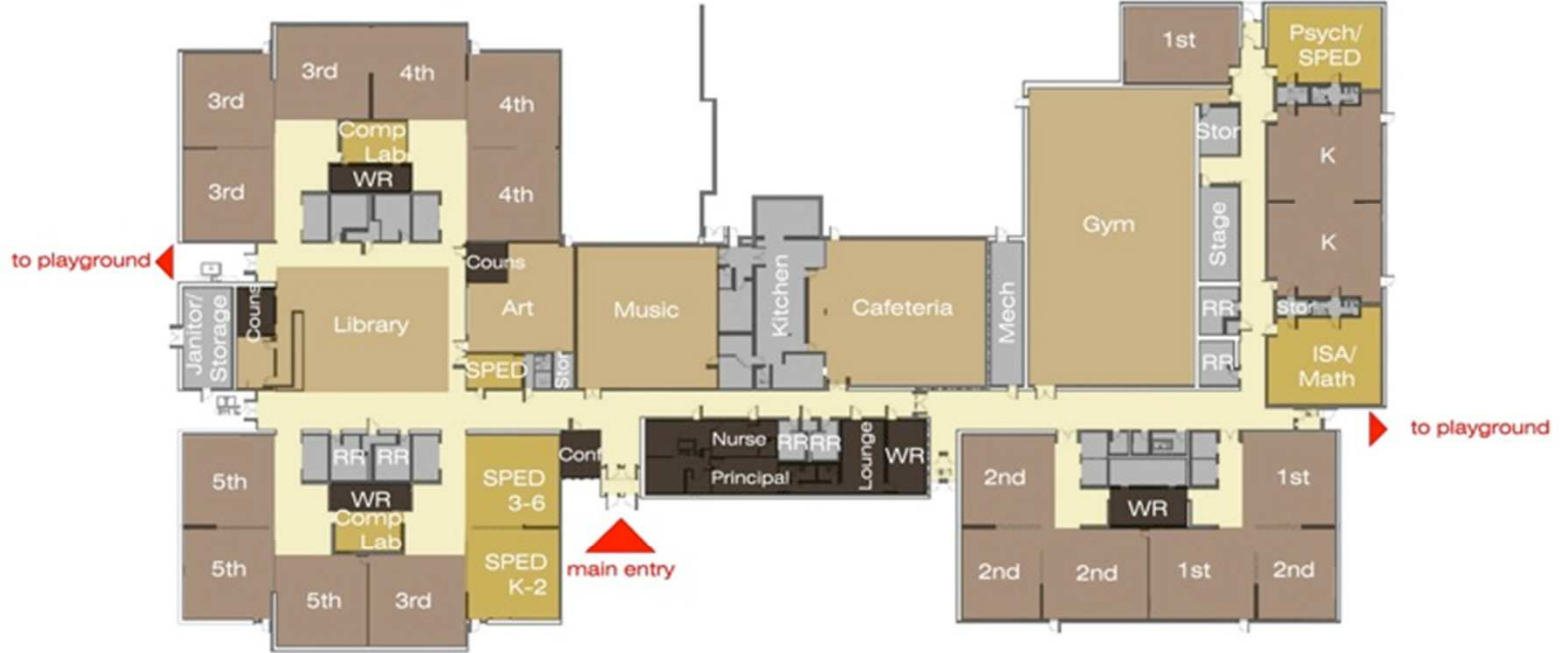
# BROKEN ARROW ELEMENTARY

Avg. Classroom Size  
870 sf



# CORDLEY ELEMENTARY

Avg. Classroom Size 895 sf, except as noted



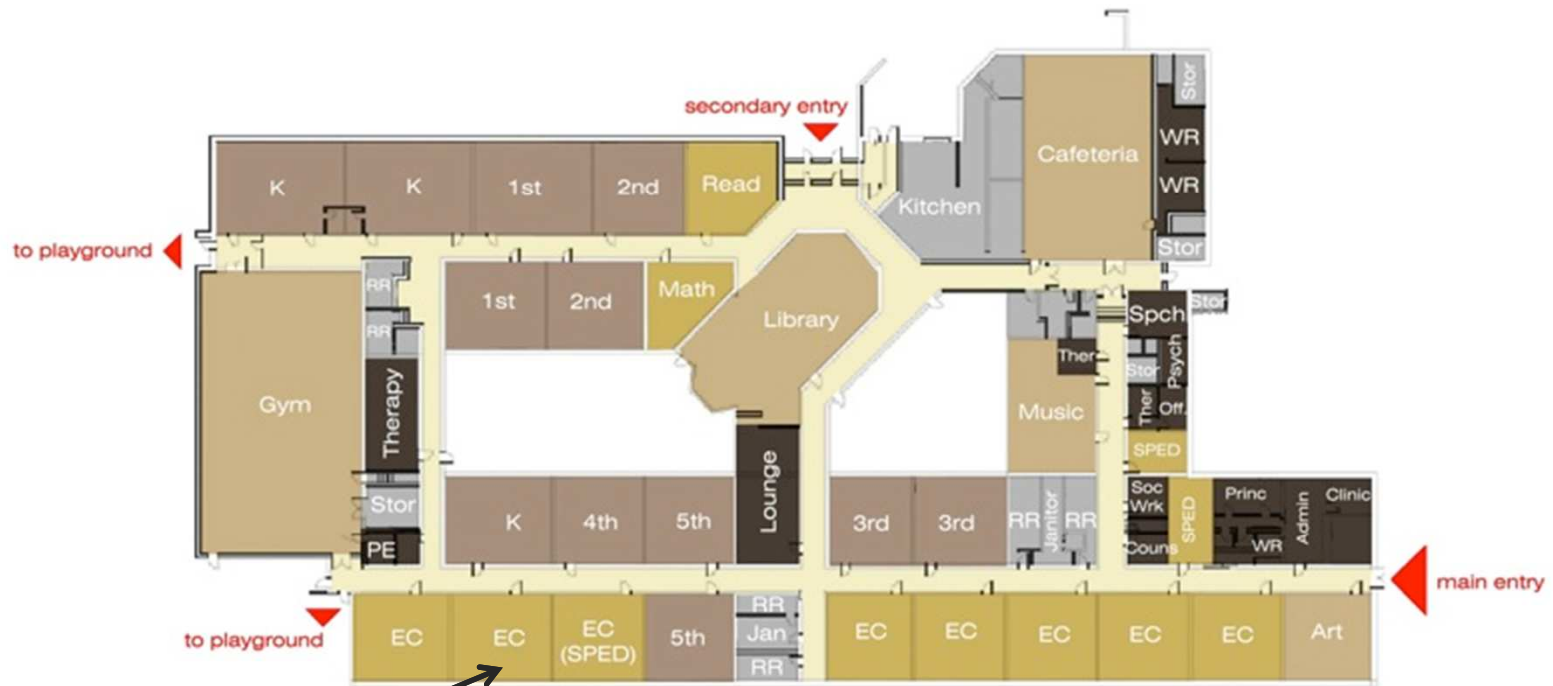
# DEERFIELD ELEMENTARY

Avg. Classroom Size  
832 sf

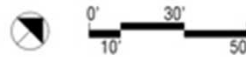


# HILLCREST ELEMENTARY

Avg. Classroom Size  
760 sf



EC: Early Childhood



# KENNEDY ELEMENTARY

Avg. Classroom Size  
783 sf

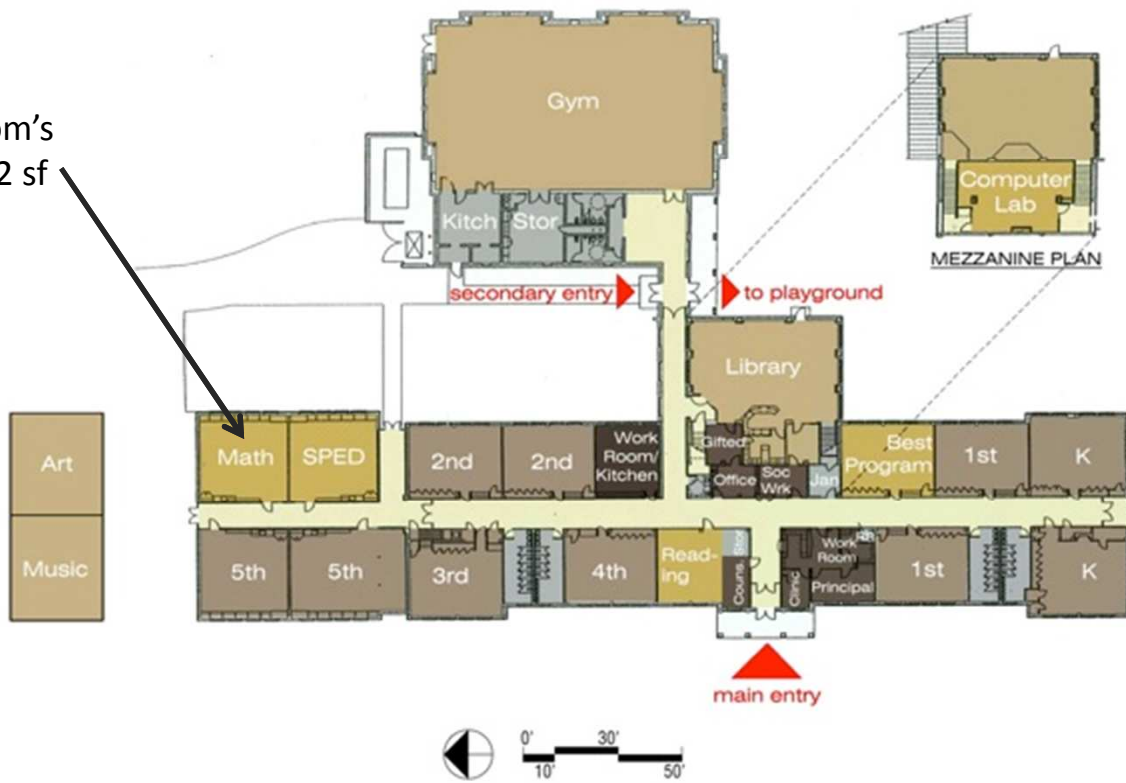
Actual Size of classrooms is typ. 900 sf; Actual useable area for student desks is 814 sf.



# LANGSTON HUGHES ELEMENTARY

Avg. Classroom Size  
814 sf, re: note above

1967 Bldg Classroom's  
3 at 728 sf; 1 at 962 sf

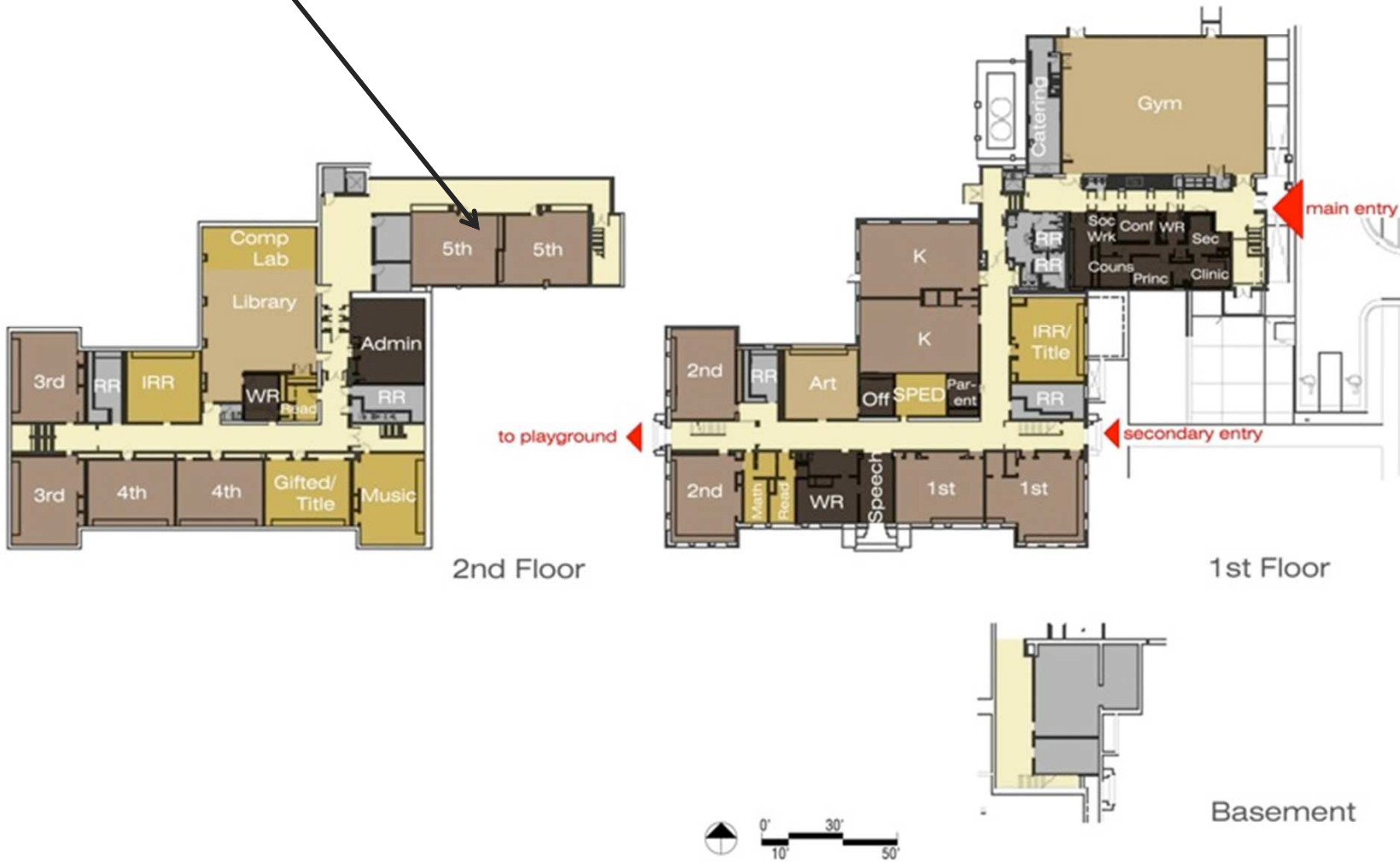


# NEW YORK ELEMENTARY

Avg. Classroom Size  
660 sf, except as noted

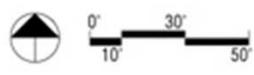
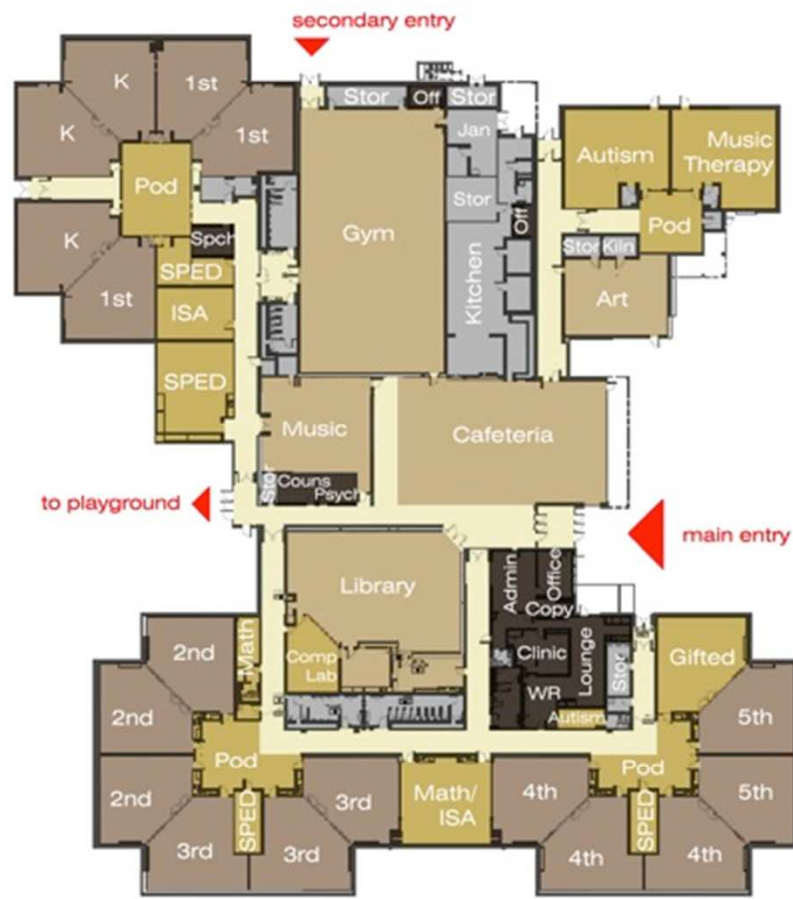


2000 Bldg Classroom's  
2 at 754 sf



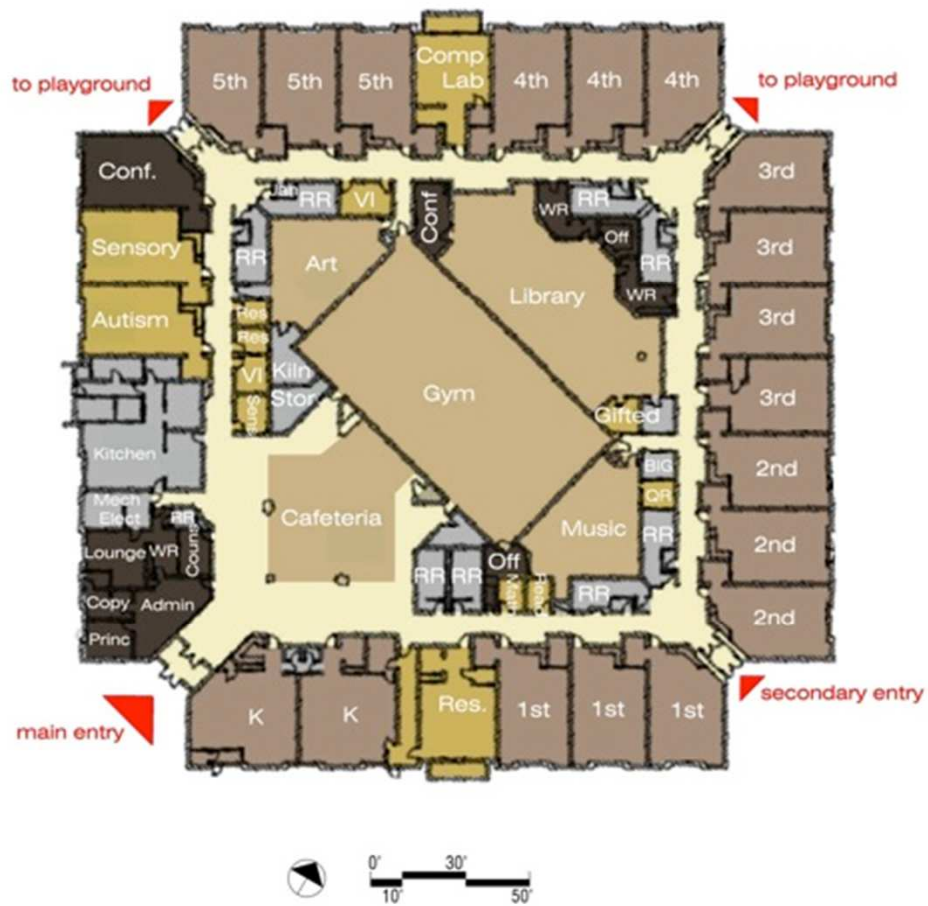
# PINCKNEY ELEMENTARY

Avg. Classroom Size  
660 sf, except as noted



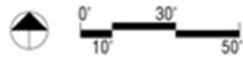
# PRAIRIE PARK ELEMENTARY

Avg. Classroom Size  
811 sf



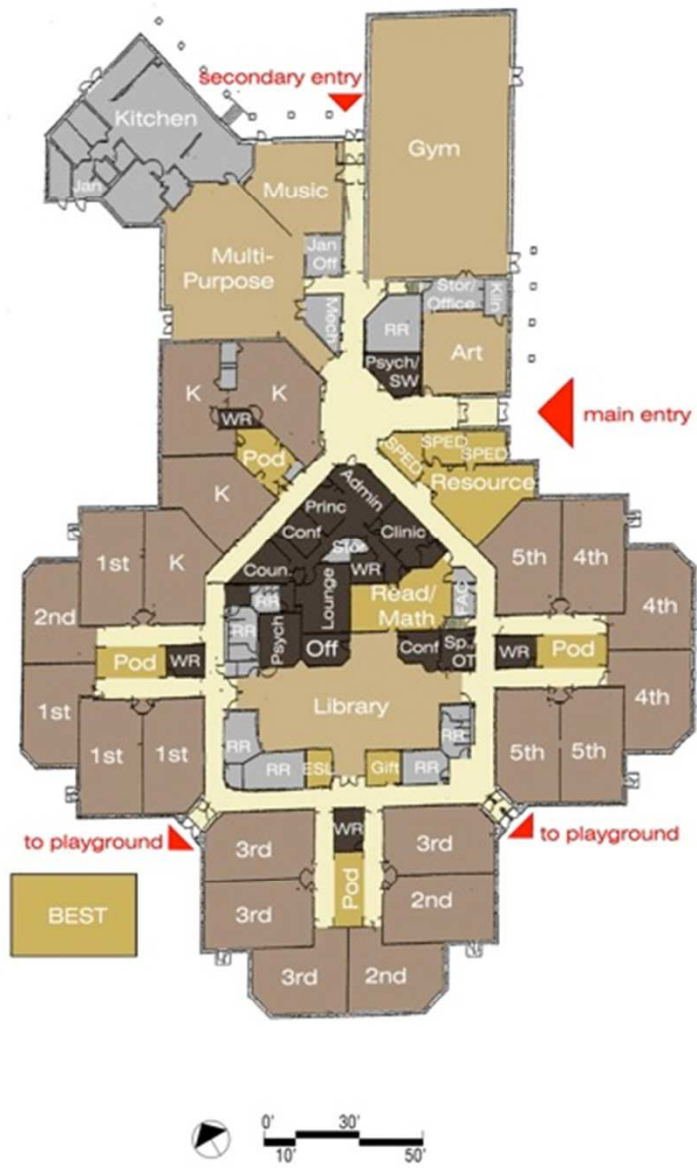
# QUAIL RUN ELEMENTARY

Avg. Classroom Size  
824 sf



# SCHWEGLER ELEMENTARY

Avg. Classroom Size  
824 sf



# SUNFLOWER ELEMENTARY

Avg. Classroom Size  
874 sf

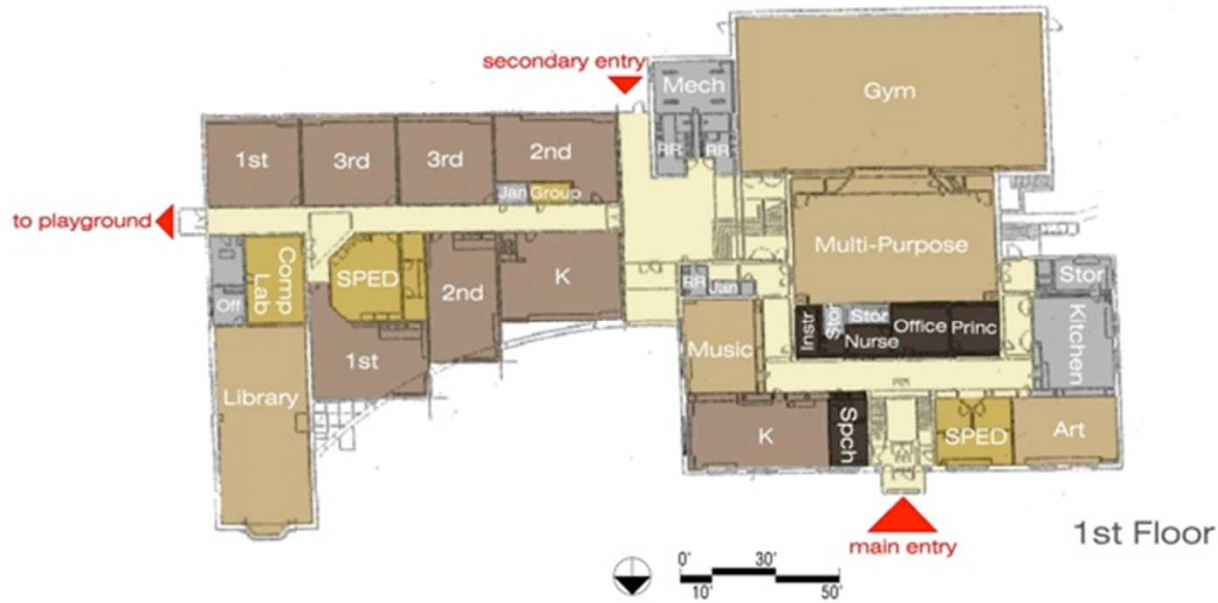


# SUNSET HILL ELEMENTARY

Avg. Classroom Size  
836 sf



1925 Bldg  
Classroom's (second  
floor) avg. 620 sf



# WOODLAWN ELEMENTARY

Avg. Classroom Size  
756 sf, except as noted

13 October, 2011  
Lawrence USD 497 Task Force  
Elementary School Capacity (K-5)

	Actual Enrollment (K-5 2011)	Capacity Factor (Students/Section) <sup>2,5</sup>	Sections Available adjusted for 1/2 day K <sup>4</sup>	Planning Capacity Adj for SF	Available Seat Count (2011/2012)	Current Utilization w/o portables (K-5 2011)	Portables Equivalent to Classroom Size	Sections Available adjusted for 1/2 day K <sup>4</sup> incl Portables	Planning Capacity Adj for SF (w/ Portables)	Available Seat Count (2011/2012 w/ Portables)	Current Utilization incl portables (K-5 2011)	Comments from 2010/2011 capacity chart
Broken Arrow <sup>3</sup>	305	24.0	14	336	31	91%	0	14	336	31	91%	added all day kindergarten; converted (2) resource rms into extra classroom
Cordley <sup>3</sup>	294	23.7	14	332	38	89%	0	14	332	38	89%	increased avail sections +1; converted resource room into room for esl
Deerfield	471	24.7	22	544	73	87%	0	22	544	73	87%	eliminated 1 portable
Hillcrest <sup>3</sup>	356	24.0	13	312	-44	114%	2	15	360	4	99%	eliminated 1 portable
Kennedy <sup>3</sup>	223	23.0	13	299	76	75%	0	13	299	76	75%	no change in avail sections
Langston Hughes	463	23.3	22	512	49	90%	0	22	512	49	90%	no change in avail sections
New York <sup>3</sup>	183	22.9	9	206	23	89%	2	11	252	69	73%	no change in avail sections
Pinckney <sup>3</sup>	231	22.8	14	319	88	72%	0	14	319	88	72%	no change in avail sections
Prairie Park <sup>3</sup>	344	24.0	21	504	160	68%	0	21	504	160	68%	no change in avail sections
Quail Run	417	25.0	21	525	108	79%	0	21	525	108	79%	no change in avail sections
Schwegler <sup>3</sup>	381	24.0	20	480	99	79%	0	20	480	99	79%	no change in avail sections
Sunflower <sup>3</sup>	491	25.0	19	475	-16	103%	1	20	500	9	98%	added all day kindergarten; reduced avail sections -1
Sunset Hill	258	25.0	11	275	17	94%	4	15	375	117	69%	no change in avail sections
Woodlawn <sup>3</sup>	229	22.0	12	264	35	87%	0	12	264	35	87%	no change in avail sections
Total	4,646	24.0	225	5,383	737	86%	9	234	5,601	955	83%	
Capacity (90% Utilization)				4,844					5,041			
Available Seat Count (2011/2012 - 90%)				198					395			

Footnotes:

<sup>1</sup> Each elementary school to provide the equivalent of 1 classroom for SPED and Math/Reading. 0 was used if a school provided adequate space through a series of smaller rooms

<sup>2</sup> Current board policy: 25:1 < 50% free and reduced lunch; 24:1 50%-75% free and reduced lunch; 23:1 > 75% free and reduced lunch

<sup>3</sup> Schools that currently have all day kindergarten

<sup>4</sup> Schools with 1/2 day kindergarten can accommodate 2 sections of kindergarten in 1 classroom or 3 sections of kindergarten in 2 classrooms.

<sup>5</sup> Capacity determined by USD 497 guideline for teacher/student ratio adjusted by sf for classrooms smaller than 720 sf. (650 sf - 719 sf: 22 students; 600 sf - 649 sf: 20 students)

<sup>6</sup> Total Classrooms was updated based on 2011/2012 school year and associated floor plans

General Note: To achieve a minimum 300 enrollment at every school per task force's recommendation, at a 90% utilization, additional classrooms would need to be added at selected schools to bring their planning capacity up to 333. Assuming portables would be eliminated, this would add additional capacity of 323 to the total planning capacity (w/o portables) in order to meet the task's force's recommendations.



13 October, 2011  
 Lawrence USD 497 Task Force  
 Elementary School Capacity (K-5)

	Total Classrooms Available <sup>6</sup>	ESL	BEST Program/ Autism	Early Childhood	Art/Music	SPED <sup>1</sup>	Math/ Reading <sup>1</sup>	Sections Available (K-5; Full day K)
Broken Arrow <sup>3</sup>	16	0	0	0	2	0	0	14
Cordley <sup>3</sup>	18	0	0	0	2	1	1	14
Deerfield	25	0	0	0	2	1	1	21
Hillcrest <sup>3</sup>	17	2	0	0	2	0	0	13
Kennedy <sup>3</sup>	23	0	0	8	2	0	0	13
Langston Hughes	23	0	0	0	2	0	0	21
New York <sup>3</sup>	13	0	1	0	2	1	0	9
Pinckney <sup>3</sup>	18	0	0	0	2	1	1	14
Prairie Park <sup>3</sup>	24	0	1	0	2	0	0	21
Quail Run	23	0	1	0	2	0	0	20
Schwegler <sup>3</sup>	25	1	0	0	2	1	1	20
Sunflower <sup>3</sup>	23	1	1	0	2	0	0	19
Sunset Hill	14	0	0	0	2	1	1	10
Woodlawn <sup>3</sup>	14	0	0	0	2	0	0	12
Total	276	4	4	8	28	6	5	221

Footnotes:

<sup>1</sup> Each elementary school to provide the equivalent of 1 classroom for SPED and Math/Reading. 0 was used if a school provided adequate space through a series of smaller rooms

<sup>2</sup> Current board policy: 25:1 < 50% free and reduced lunch; 24:1 50%-75% free and reduced lunch; 23:1 > 75% free and reduced lunch

<sup>3</sup> Schools that currently have all day kindergarten

<sup>4</sup> Schools with 1/2 day kindergarten can accommodate 2 sections of kindergarten in 1 classroom or 3 sections of kindergarten in 2 classrooms.

<sup>5</sup> Capacity determined by USD 497 guideline for teacher/student ratio adjusted by sf for classrooms smaller than 720 sf. (650 sf - 719 sf: 22 students; 600 sf - 649 sf: 20 students)

<sup>6</sup> Total Classrooms was updated based on 2011/2012 school year and associated floor plans

ESL/SES Student Data 2011-12

Sum of FTE					
School	NonESL	ESL	Total	NonESL(%)	ESL(%)
Cordley Elementary	218	86	303	71.8%	28.2%
Hillcrest Elementary	135	228	363	37.2%	62.8%
Kennedy Elementary	320	17	337	95.0%	5.0%
New York Elementary	175	3	178	98.3%	1.7%
Pinckney Elementary	209	12	221	94.6%	5.4%
Sunset Hill Elementary	240	12	252	95.2%	4.8%
<b>Total</b>	<b>1,296</b>	<b>358</b>	<b>1,653</b>	<b>78.4%</b>	<b>21.6%</b>

Sum of FTE							
School	Paid	Free	Red.	Total	Paid(%)	Free(%)	Red.(%)
Cordley Elementary	173	106	25	303	57.1%	34.8%	8.1%
Hillcrest Elementary	156	164	44	363	42.9%	45.0%	12.1%
Kennedy Elementary	104	193	40	337	30.8%	57.3%	11.9%
New York Elementary	48	115	15	178	27.0%	64.8%	8.2%
Pinckney Elementary	94	109	19	221	42.5%	49.1%	8.4%
Sunset Hill Elementary	145	95	13	252	57.3%	37.7%	5.0%
<b>Total</b>	<b>719</b>	<b>781</b>	<b>154</b>	<b>1,653</b>	<b>43.5%</b>	<b>47.2%</b>	<b>9.3%</b>

Member Lois Orth-Lopes requested that links to information on the district's website be shared with the Working Group in advance of its discussion of equity.

District Educational Equity and Excellence Plan:

<http://www.usd497.org/EducationalEquityAndExcellence/>

Board of Education's goals around equity:

<http://www.usd497.org/BoardGoals/Equity>

Action steps for Board of Education's "Courageous Conversations" goal:

<http://www.usd497.org/BoardGoals/CourageousConversations>